



VISTAFOLIA®

ARTIFICIAL GREEN WALLS

INSTALLATION GUIDE



www.vistafolia.com

Copyright © 2020, Vistafolia Limited. All rights reserved.

SITE SURVEY

The main aim during the site survey is to confirm dimensions and assess installation requirements.

POINTS TO CONSIDER DURING SURVEY

- Loading / Unloading of goods – proximity to site, parking requirements/restrictions
- Access through the property for materials
- Storage on site
- Access to the site:
 - Low-level
 - Mid-level (Step Ladder/Platform)
 - High-level (Mobile Scaffolding or Full Scaffolding required)
- Check make up of surface to be fixed into
- Enquire about services:
 - Electric
 - Water/Gas
 - Waste pipes
- If fixing into boundary/party walls enquire about any terms from neighbours – these can often be passed back to the client/designer to answer ie. noisy works
- Waste removal – Vistafolia panels are packed for transport and all waste packaging is widely recycled

TOOLS REQUIRED FOR THE SITE VISIT

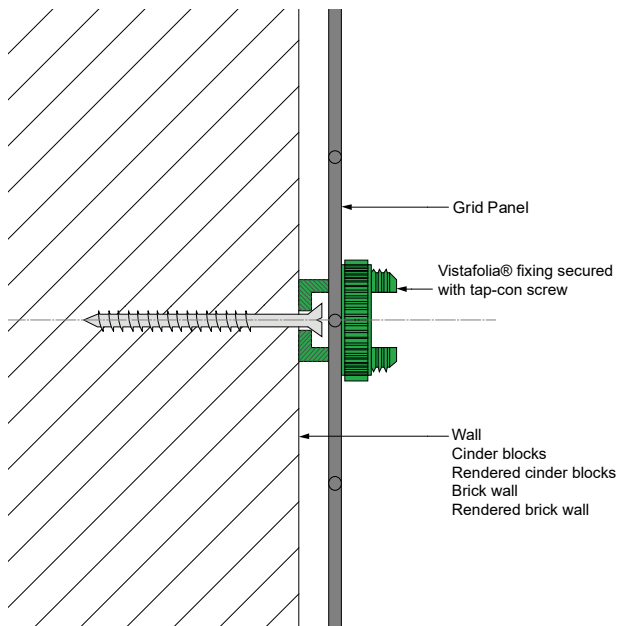
- Sample panel and sample fixing if client is also present
- Vistagreen Technical guide and Brochure
- Tape measure / Disto laser
- Sketch pad + pencil
- Camera

NOTE: All instructions on installation are for technical advice only. All methods of installation should be checked with the building regulations, specific to the country they are being installed.

INSTALLATION METHODS

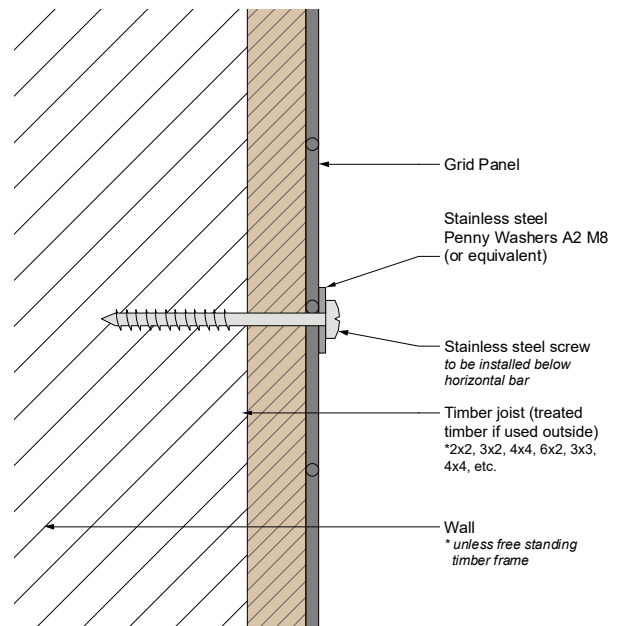
METHOD 1:

Brick/Cinder Block wall using Vistagreen fixing



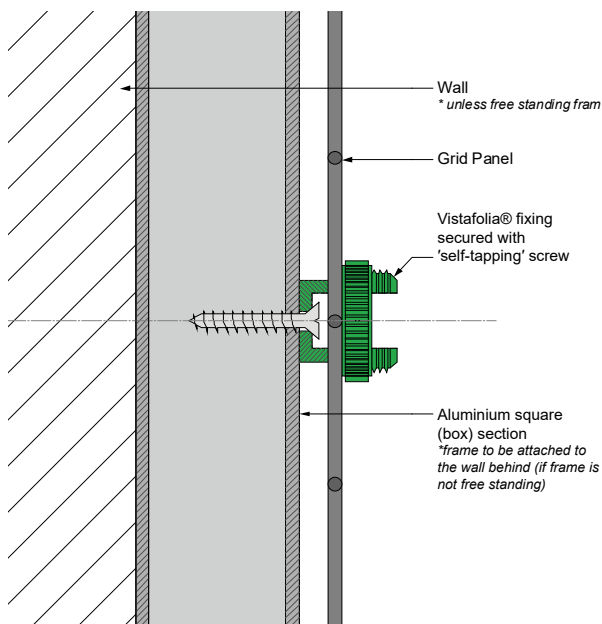
METHOD 2:

Timber frame using screw and washer



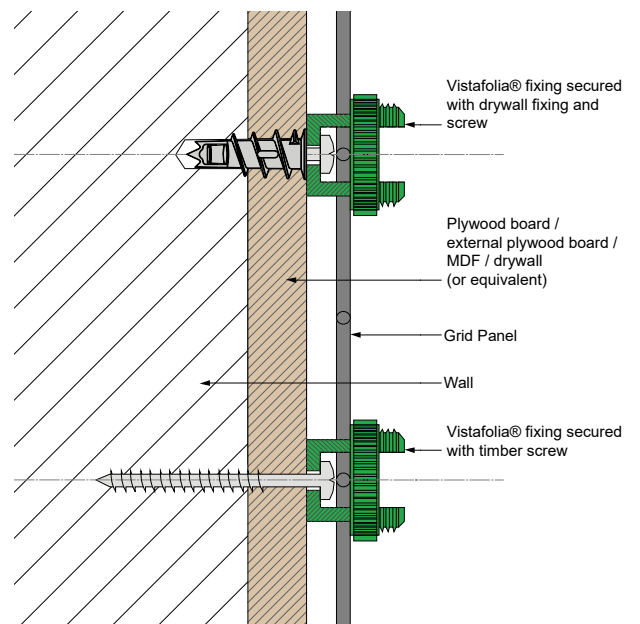
METHOD 3:

Aluminium (metal) bar



METHOD 4:

Plywood board / MDF / Drywall



INSTALLATION TOOLS

These are the tools that you need to install Vistafolia®.



Safety goggles



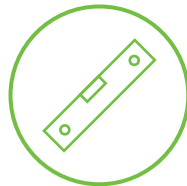
Tape measure



Drill



Safety gloves



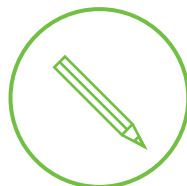
Spirit level



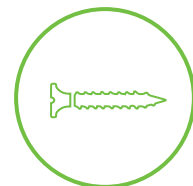
Drywall fixings



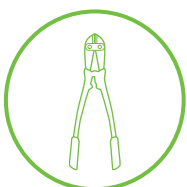
**Ladders or
mobile tower**



Pencil



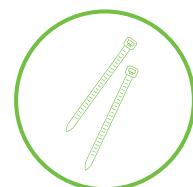
Screws



Bolt cutter



Wire cutter



Cable ties



QUICK & EASY INSTALLATION

Use the optional Vistafolia® Fixings for a neat and failsafe installation. Use 4 per panel.



The Vistafolia® Fixing System has been specifically designed to securely hold Vistafolia® Panels in the optimum position and to give the best result in a wide variety of applications.



www.vistafolia.com

6 EASY STEPS TO FOLLOW



Measure & mark



Drill the holes



Plug & screw the fixing



Attach the panel



Secure the fixing



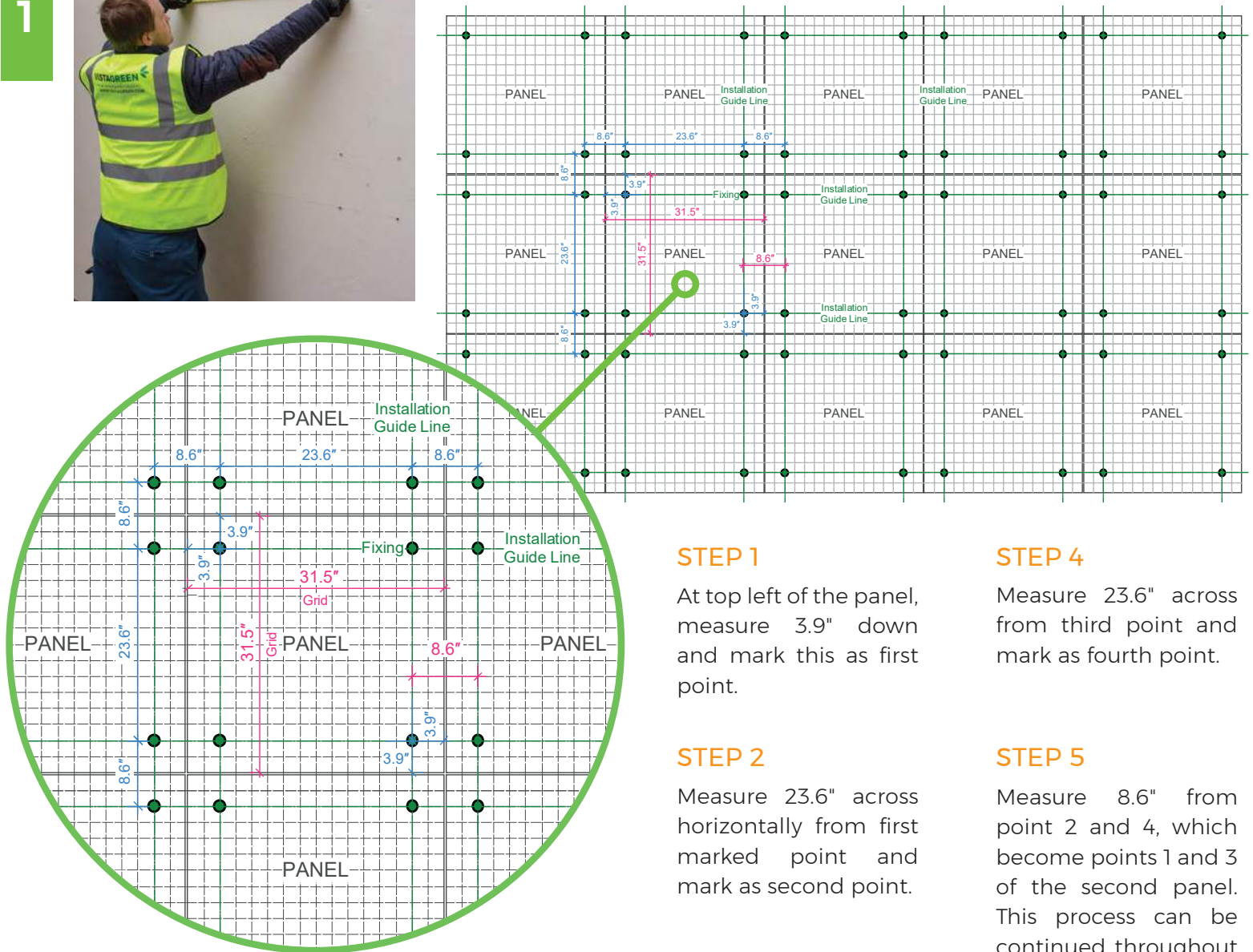
Ruffle & bend the foliage

FIXING LAYOUT

1



Measure and mark the holes in the wall.



The fixing should ideally be installed on the cross joint of the grid as shown on the diagram above; however, it is possible to secure the Vistafolia Panels with fixings on the horizontal or vertical bars, with the latter being the least recommended option.

STEP 1

At top left of the panel, measure 23.6" across, measure 3.9" down and mark this as first point.

STEP 2

Measure 23.6" across horizontally from first marked point and mark as second point.

STEP 3

Measure 23.6" down vertically from first marked point and mark as third point.

STEP 4

Measure 23.6" across from third point and mark as fourth point.

STEP 5

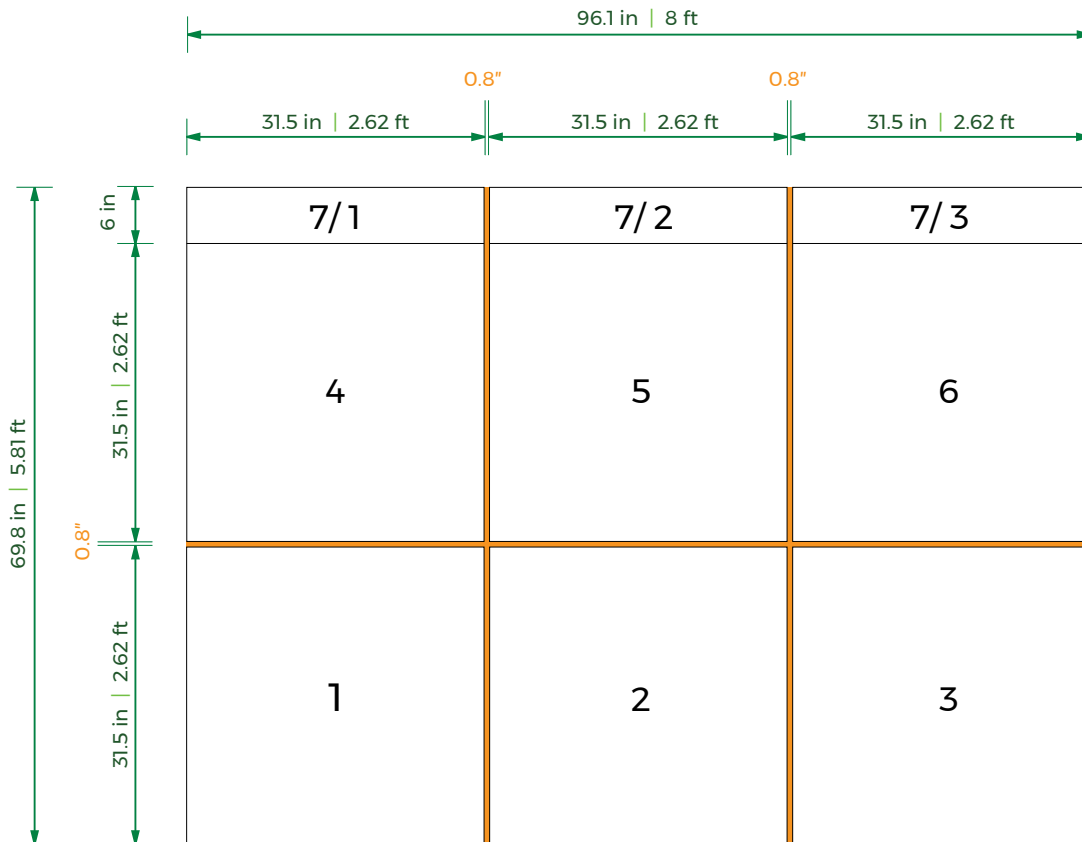
Measure 8.6" from point 2 and 4, which become points 1 and 3 of the second panel. This process can be continued throughout installation.

GAPS BETWEEN PANELS

We recommend to leave a gap between panels to allow for easier installation and to reduce bunching of foliage or joins.

The maximum gap between 2 panels can be : 0.8"

RECOMMENDED GAPS BETWEEN PANELS



NOTE: The overlap of the panels allows for up to an extra 0.8" between before the joins become noticeable. By spacing the panels slightly further apart we can ensure complete coverage of the area without needing extra panels.

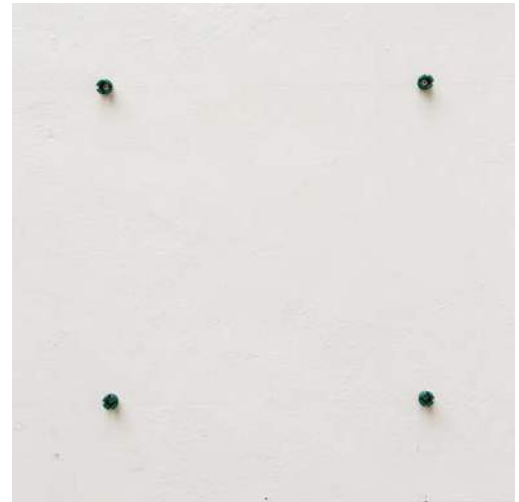
2

When all the holes from the fixing layout have been marked, drill them. Then, insert the grey rawlplug in each hole.



3

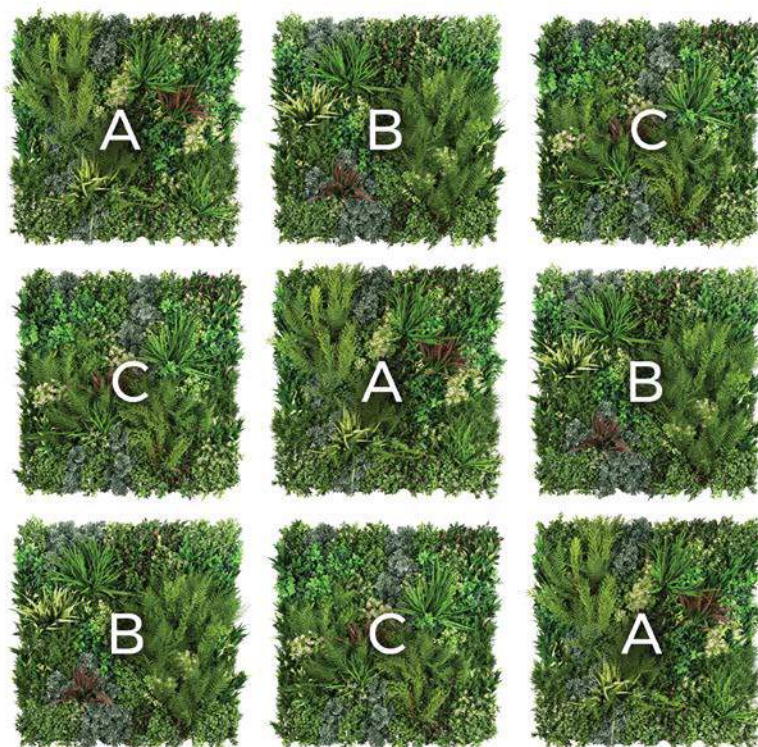
Plug in the fixings and screw the fixings in (not too tight). Use 4 fixings per panel, one in each corner.



4 Attach the panel to the fixings.



Make sure you mix the panels so you don't have the same panel against to another.



5

Plug in the fixing and secure the top cap of the fixing, turning clockwise until tight.



6

Place panels side by side. Spend some time ruffling and bending the foliage for a natural look.



PANEL PREPARATION

Preparing the panels is the most important step in the installation process. Without preparation, the panels will look flat and lifeless and the wall will not look as good as it should. The following steps should be followed to ensure the wall looks as beautiful and as realistic as possible:



AFTER INSTALLATION

1. Install all the panels to the wall.
2. Unfold the foliage as panels will look flat and compressed.
3. Pull the larger plants away from the panel to make them stand up. Although the plants should be secure enough so as not to come loose, do not use excessive force.

NOTE: Some of the smaller leaves may come loose during preparation, this is to be expected. As extra leaves are added during the manufacturing process to compensate for any small loss, this will not affect the look of the product.

1.

Manipulate the foliage with your fingers. Pulling the plants in different directions will add to the realism and replicate natural, random growth.

2.

Once you have prepared the larger plants, do the same with the smaller ones.

3.

Repeat the same process after all panels have been taken out of the boxes or installed.

DRESSING THE PANEL

ADDING EXTRA FOLIAGE AFTER PANELS ARE INSTALLED

Once all of the panels have been installed, it is important to dress the wall (add extra foliage) to ensure it will be visually appealing, full of texture and as realistic as possible.



Customize, design, change the look with our Colour and Texture Boxes of flowers and plants. Available in 8 varieties: Soft Lavender, Delicate White, Spring Pink, Forest Flame, Lush Green, Large Grasses, Trailing Ivy and Trailing Buxus.

- 1 Randomly place the plants into the wall.
- 2 Hold the stem against the grid.
- 3 Pass the cable tie behind the horizontal line of the grid.
- 4 Use 3 cable ties to secure properly. One on the main branch, two on each side stem.
- 5 Tighten, secure and cut the cable tie.



TIPS

Each Colour and Texture Box contains plants which will give coverage for 8-10 panels but there is no limitation, you can add as many plants as you want, it is down to individual taste.

By grouping plants together (3, 5, 9 or 15 plants), you can achieve bold drifts of flowers that look good and bring exciting texture to the wall.

Creating a truly bespoke wall is simple, using add-on Colour and Texture Box packs.

FINISHING THE GREEN WALL

Here at Vistafolia[®] we are trying to replicate nature's random growth and by adding extra foliage to the walls the natural random look can be achieved.



1

Green wall without the foliage being pulled and opened.

Without preparation, the panels will look flat and lifeless and joins between panels can be visible.



2

Green wall with the unfolded foliage.

Unfolded foliage will add life and volume to the green wall.



3

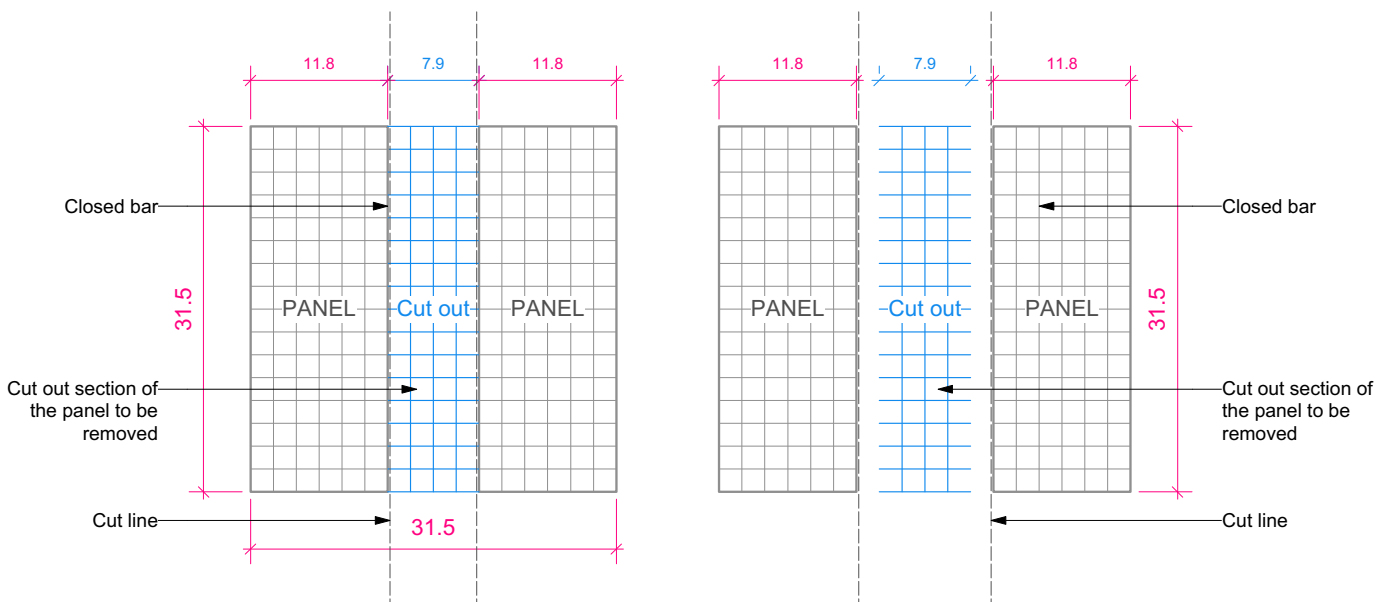
Green wall with the unfolded foliage and added Colour and Texture Boxes.

Panels after being unfolded and customised with Colour and Texture Boxes will create a totally bespoke look.

HOW TO CUT THE VISTAFOLIA® PANELS

CUTTING TIPS

1. All cut panels to finish on a closed bar, so the plants don't slip off.
2. Spare foliage from the offcuts to be re-attached to the rest of the green wall where required.
3. Plastic ties to be removed from the off-cut parts of the panels.
4. Vertical cuts are easier to make than horizontal cuts.
5. Horizontal cuts to be started from the top of the panels (unless otherwise required).
6. Always cut from the inside out.



Units: inches

NOTE: Vistafolia® Panels are best cut using a bolt cutter. Cutting discs cause damage to foliage and the sparks may leave melt marks and black marks. The disc cutters also leave very sharp edges on cut grid. Personal Protection Equipment is recommended to be worn prior to cutting, safety glasses and gloves as a minimum.

CUTTING GUIDE



STEP 1

Measure carefully and mark the area to be trimmed.



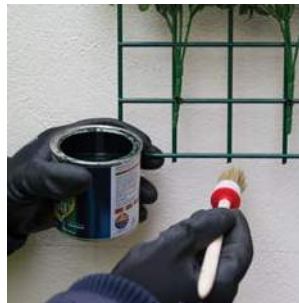
STEP 2

Clip off the excess as close as possible to a grid section and separate the parts.



STEP 3

File the grid after cutting.



STEP 4

Protect cut point with metal paint.



STEP 5

Re-attach loose plants from the vertical off-cuts with cable ties.

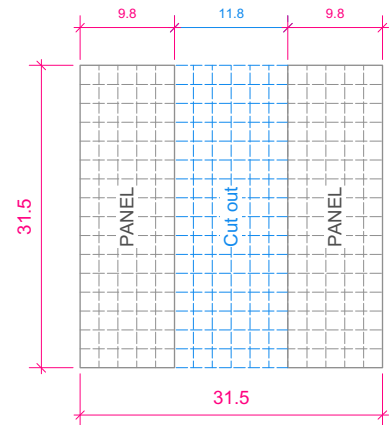
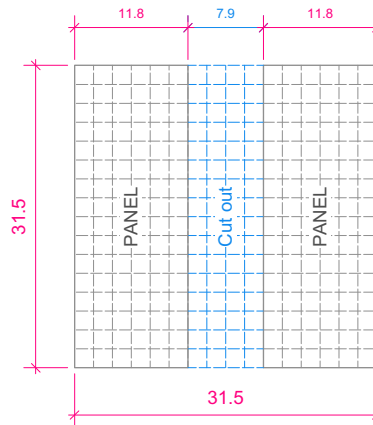
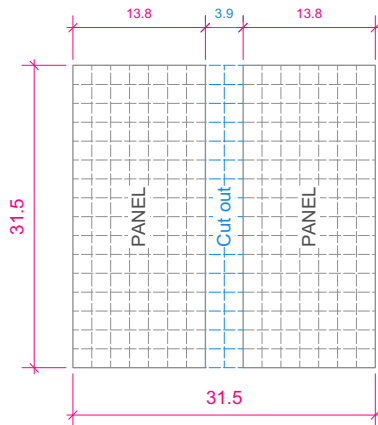


STEP 6

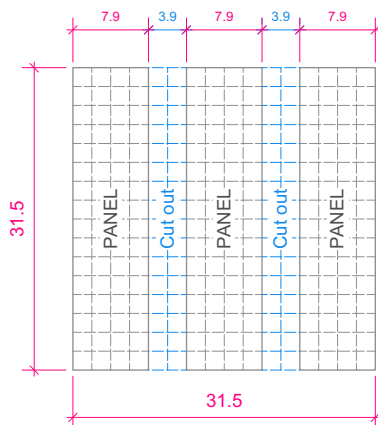
Re-adjust any plants on the cut parts and fill in all the gaps with loose foliage.

VERTICAL CUTS

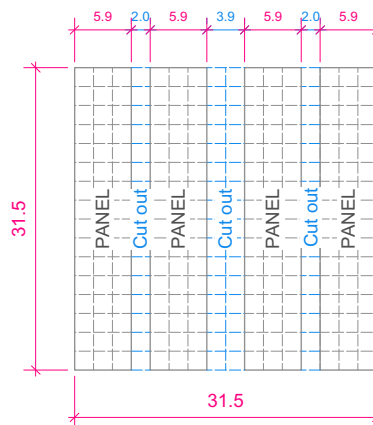
2x Sections from 1x Panel



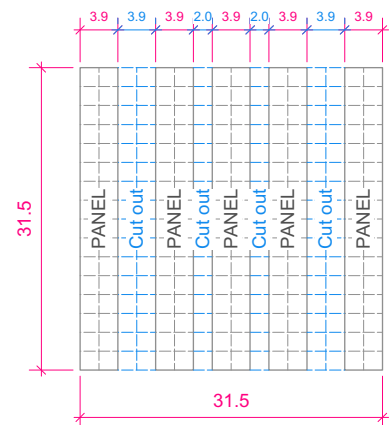
3x Sections from 1x Panel



4x Sections from 1x Panel



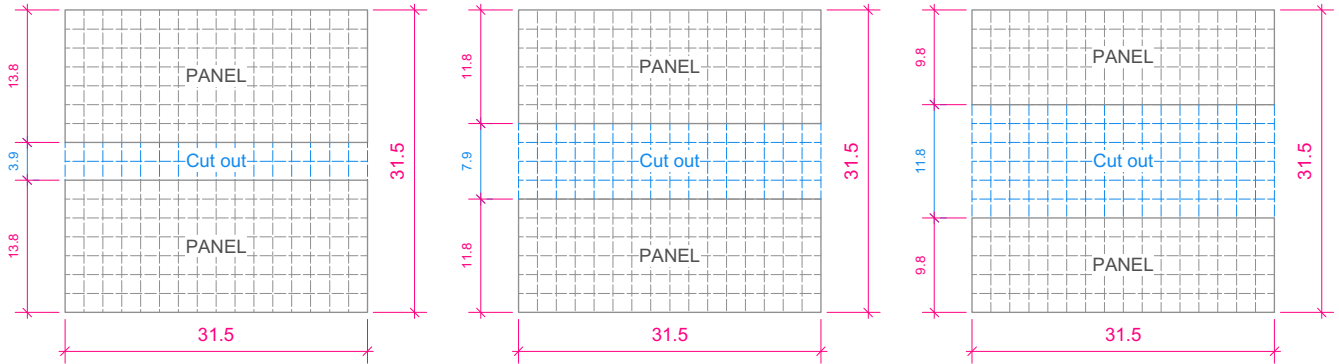
5x Sections from 1x Panel



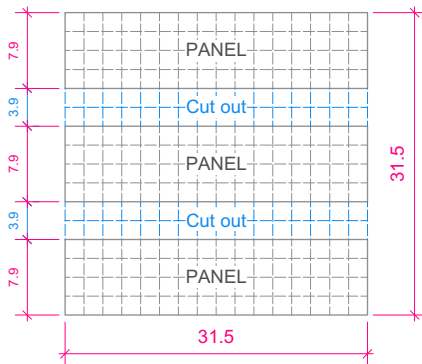
1. Vertical cuts are made from the front of the panel. The horizontal bars on the grid are needed to be accessed to ensure a clean tight cut back to the grid.
2. The foliage on the front of the panel will hinder accessing the grid so remove the cable ties securing plants on the vertical section where the cut is required. * only remove the cable ties between the cut and the next vertical bar of the grid on the waste side. At this point the foliage hindering access to the grid can now be removed or slide away to allow clear access to the grid.
3. Re-attach any loose foliage and install as per *Cutting Guide* on page 15.

HORIZONTAL CUTS

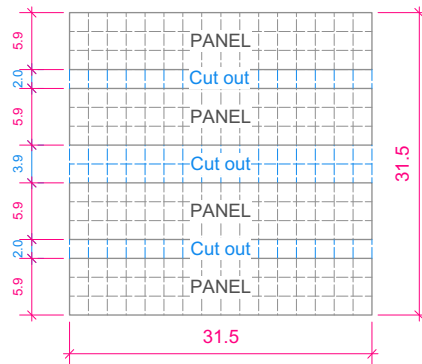
2x Sections from 1x Panel



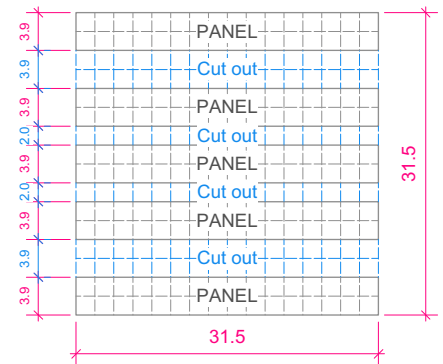
3x Sections from 1x Panel



4x Sections from 1x Panel



5x Sections from 1x Panel



1. Horizontal cuts are always made from the rear of the panel. The way in which the grid is over laid makes access the vertical bars (required to cut when making horizontal cuts) simple from the rear.
2. Hold the cutters at 45 degree to enable the blade of the cutters to get as close as possible to the perpendicular bar on the grid and make the cut.
3. Repeat until the entire panel is cut.
4. Cut any cable ties from the waste section of panel that is securing any foliage hindering the separation of the two pieces. Separate.
5. Re-attach any loose foliage and install as per *Cutting Guide* on page 15.

TRAINING VIDEOS FOR INSTALLATION

Links to new Vistafolia Videos

 Prepare Vistafolia® Panels for the installation

<https://vimeo.com/257695202/f2e0fb7ab5>

Installation guide

<https://vimeo.com/207298766/b373300dbb>

Cutting guide

<https://vimeo.com/184315410/24a0ea96f1>

Dressing guide

<https://vimeo.com/182716474/3ac95fe850>

TIMBER FRAME FOR THE VISTAFOLIA[®] PANELS

In some cases, a timber frame needs to be arranged in order to have a fix and sturdy base for the Vistafolia[®] Panels:

- Existing fence is not strong enough for installation
- The existing wall or fence is uneven
- Waterproof membrane wall

EXAMPLE



METAL FRAME FOR THE VISTAFOLIA® PANELS

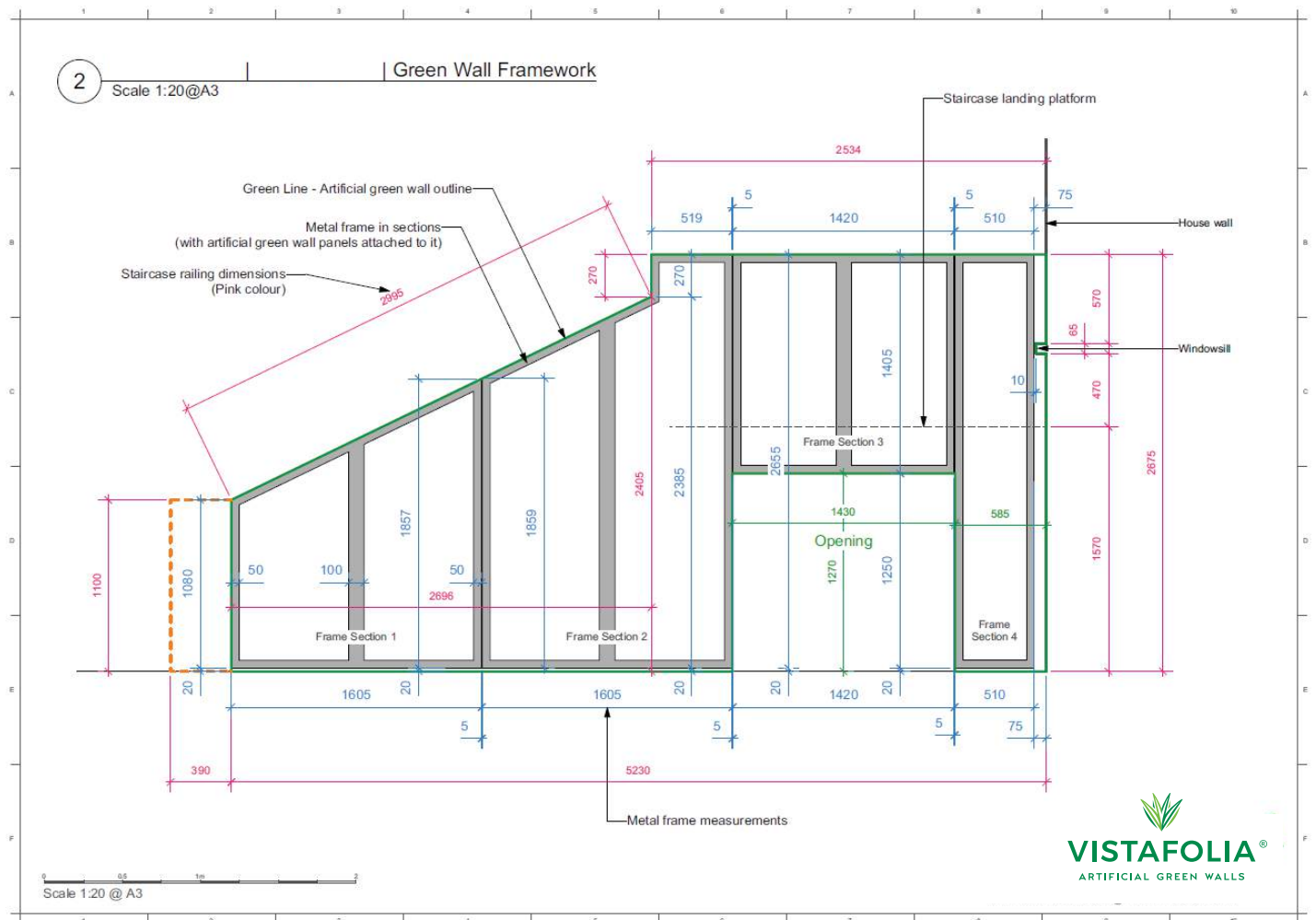
The metal frame system needs to be arranged in a similar way to the timber frame. The main difference is timing.

While the timber frame can be done by the installer/contractor on the same day of installing the Vistafolia® Panels, the metal frame needs to be fabricated prior by a professional metal fabricator which takes time since it is bespoke for each specific project.

If the panels need to be cut obliquely like on the project with the metal frame above, then we recommend to use silicone end caps to cover any sharp edges of the steel grid.



EXAMPLE



Metal frame layout plan advice: (needs to be approved by the architect)

WATERPROOF MEMBRANE FOR THE VISTAFOLIA® PANELS / DELTA PLUG LAYOUT ADVICE

ARRANGING INSTALLATION ONTO WATERPROOF MEMBRANE

- Site visit to discuss with the contractor where the green wall panels are going and advice on the location of the Delta Qwik-Seal Plugs
- Contractor to mark and install Delta Qwik-Seal Plugs onto the waterproof membrane (warranty)
- Contractor to install timber frame onto the Delta Plugs
- Vistafolia® Panels can be installed onto the timber frame with simple screws and washers

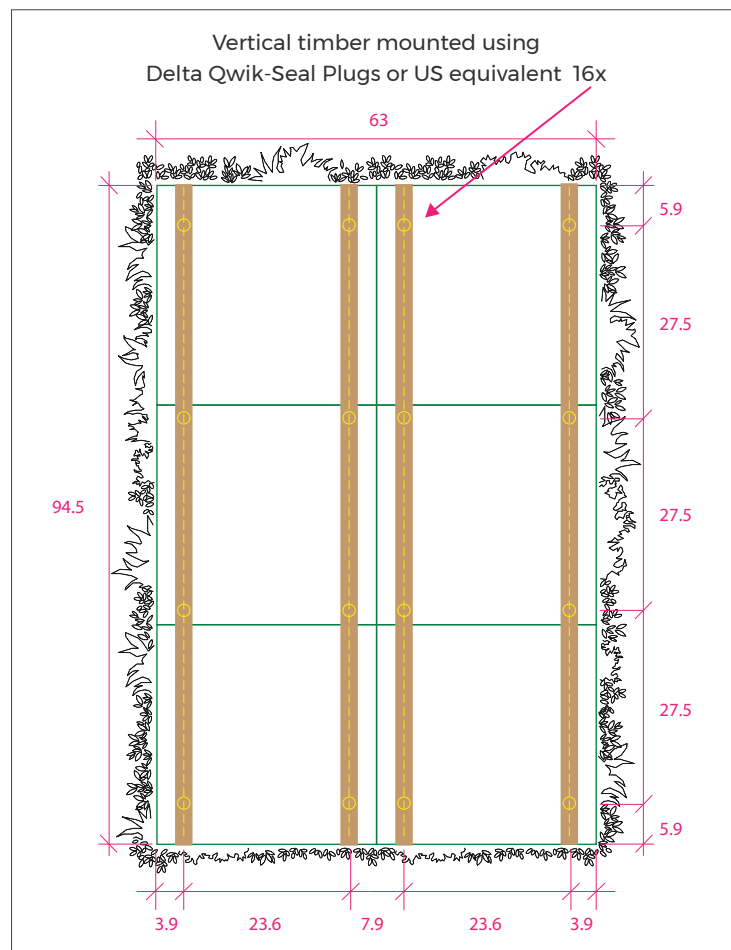
The reason for fixing a baton into the membrane is that usually a separate contractor would be employed to fix through the waterproof membrane (warranty) and by fixing vertical batons leaves tolerance for the final fix of the Vistafolia panels.



Delta Qwik-Seal Plug



Delta Qwik-Seal Plug installed into the waterproof membrane



Layout plan advice for the Delta Plugs and timber

LOGO IN FRONT OF THE VISTAFOLIA® PANELS

If a customer would like to arrange a Sign/Logo in front of the Vistafolia® Wall, we usually ask them to get the Sign or Logo Company to go on site first and install the fixings of the Sign/Logo and any electrical cables the logo requires.

Once the Sign/Logo fixings + cables are in place the Vistafolia® Wall can be installed on top of it allowing any existing fixing to go through on the Vistafolia® Panel grid.

After the Vistafolia® Wall installation the Sign/Logo company needs to return and attach the Sign/Logo onto their fixings.

EXAMPLE



Fixings of the Sign - Letters to be removed before Vistagreen installation



Completed Vistafolia® wall with the Sign/Logo on top (Dressed with Lush Green Texture Box)

INSTALLING ONTO RAILINGS

The panels can be also installed onto metal grids or balcony railings as well. Instead of using the Vistafolia[®] Fixings the panels can be simply attached with high quality UV Stable (if outdoor) heavy duty cable ties.



EXAMPLE

UV Stable heavy-duty cable ties



Metal cage before Vistafolia[®] installation



Completed project dressed with Delicate White Colour Box prior to install due to complicated access to the wall

CREATING A FREESTANDING WALL

It is also possible to create freestanding walls with Vistafolia Vistafolia Panels for offices or events.

A large planter box with aluminium internal frame needs to be arranged and the panels can be attached to the aluminium frame.

It is important to consider the total height and width of the wall when creating a freestanding wall to make sure that it won't fall over.

EXAMPLE





VISTAFOLIA®

ARTIFICIAL GREEN WALLS

HEAD OFFICE / R&D FACILITY:

Vistafolia Ltd.

Unit 6 Trade City, Lyon Way,
Frimley, Camberley, Surrey
GU16 7AL United Kingdom

Tel: +44 (0)20 7385 1020

US SALES OFFICE

Tel: +1 727-325-2901

Email: info@vistafolia.com

Follow us:



www.vistafolia.com